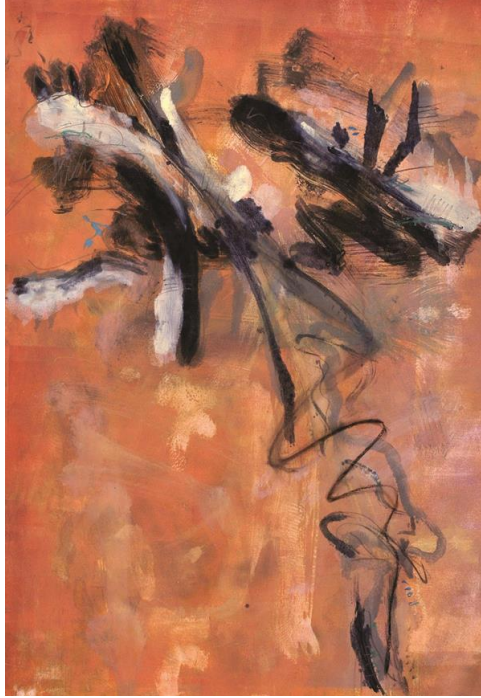


Currently Exhibiting in the Art's Alive Gallery
@ Main Street Landing's Union Station Lyna Lou Nordstrom UNDER PRESSURE
November 1-30, 2013



A Tribute to Zhu Ming

Artist Statement: Lyna Lou Nordstrom

Nature displays color and texture everywhere. This is what inspires me. Purple splashes emerge from a field turning brown and tan. The ocean creates a wavy pattern in the sand. Feathers, the light filtering through leaves and a shag bark hickory tree display texture, shape and pattern. Even my non-representational, painterly style reflects the essence I absorb from lavender and persimmon sunsets, yellow sunflowers, prickly cacti and the movement of the wind. Conversations with and observations of people expand my possibilities. My vision, a snippet of life, often focuses on the detail I want viewers to see. I use photographic techniques to add to my printmaking imagery. By introducing old photos or direct images from plants, I can create a story. In order to keep a healthy studio environment, I choose to use non-toxic materials and processes. I take every class I can get my hands on in printmaking because of its limitless possibility. My favorite music influences the rhythm of my brush strokes. My colors are friendly...the imagery healing. The process of creation gives me great joy!

Artist's Reception Friday November 22, 5-7pm!